

February 24, 2017

## Gilbane Construction Update

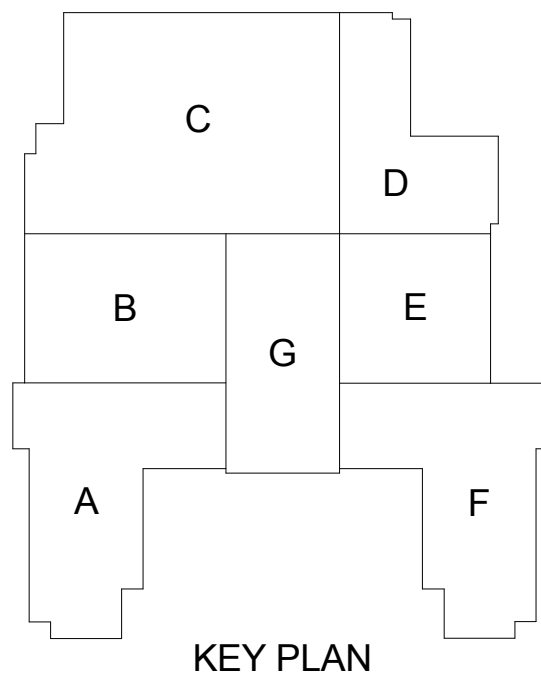
### Activities in progress as of February 24, 2017:

- ▶ Quarry tile floor prep on Area D Cedar Level Kitchen started.
- ▶ Interior stone veneer installation on Area A Cedar Level in progress.
- ▶ Rubber wall base installation on Area A 3<sup>rd</sup> floor started.
- ▶ Curtainwall framing & glazing installation on Area E Cedar Level started.
- ▶ Wood flooring finishing on Area B Washington Level Competition Gym in progress.
- ▶ Mosaic floor tile on Area C Washington Level in progress.
- ▶ Quarry tile installation on Area F 2<sup>nd</sup> floor started.
- ▶ Quarry tile grouting on Area A 2<sup>nd</sup> floor in progress.
- ▶ Painting accent walls on Areas A & F 3<sup>rd</sup> floor started.
- ▶ Taping coffered ceilings on Area G 2<sup>nd</sup> floor in progress.
- ▶ Toilet partition installation on Areas A & F 3<sup>rd</sup> floor in progress.

### Upcoming Project Milestones:

- ▶ Vocal level wood flooring installation scheduled to start on 03/06/17.
- ▶ Competition Gym telescoping bleacher installation scheduled to start on 03/17/17.

### Construction Key Plan:





Interior Stone Veneer Installation Area F Vestibule



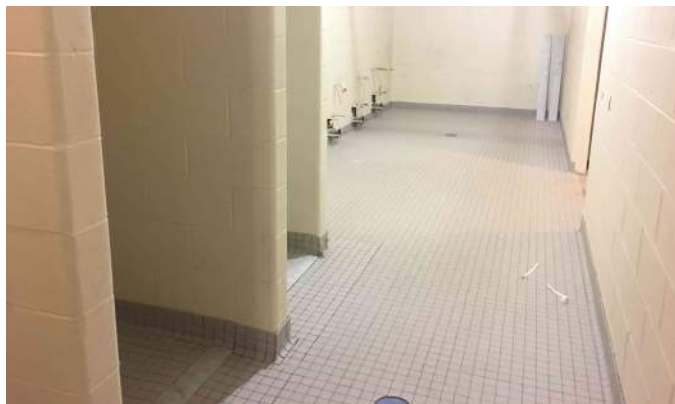
Classroom Finishes Area A 2nd Floor



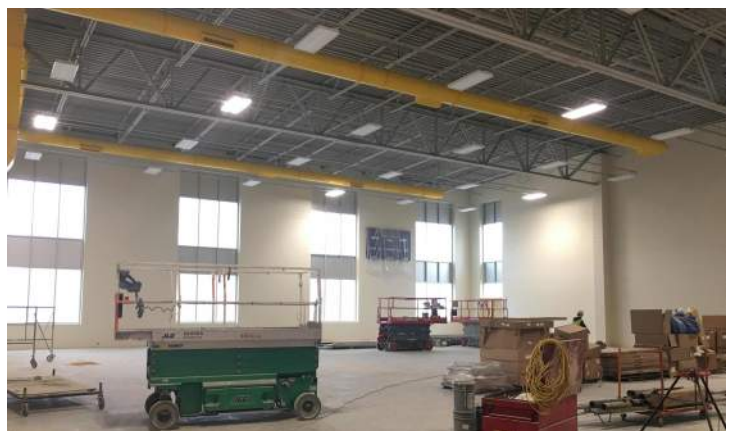
Painting Accent Walls Area A 3rd Floor



Coffered Ceiling Drywall Finishing Area G 2nd Floor



Mosaic Tile Installation Area C Washington Level



Painting Structural Steel Area C Washington Level

